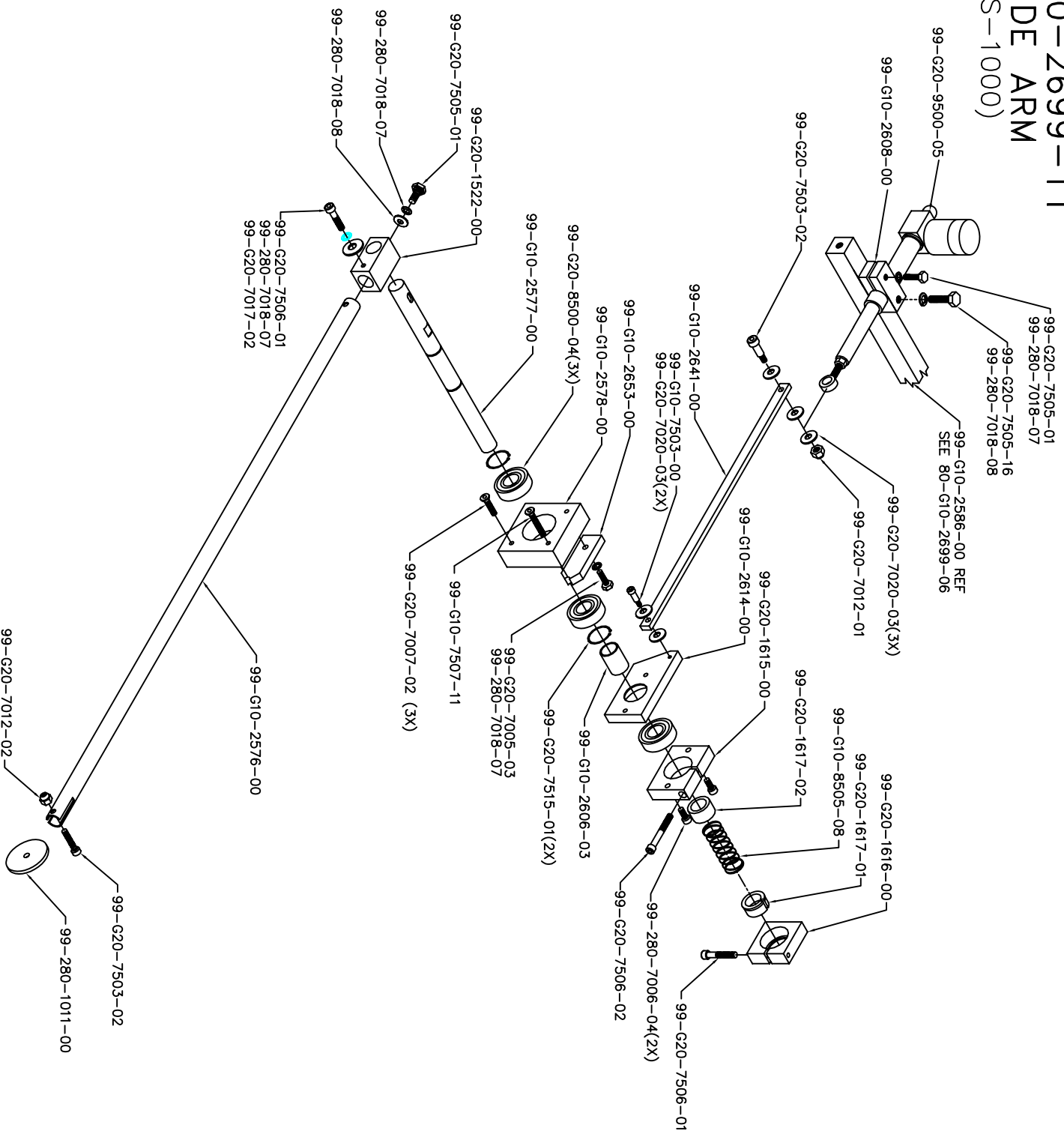


80-G10-2699-11 GUIDE ARM (GS-1000)



GUIDE ARM 80-G10-2699-11

PART #	DESCRIPTION	QTY
99-280-1011-00	WHEEL, YELLOW	1
99-280-7005-03	1/4-20 X 3/4 H.H.	1
99-280-7006-04	1/4-20 X 3/4 SHCS	2
99-280-7007-02	1/4-20 X 3/4 FHS SST	3
99-280-7012-01	10-24 CAD PLATED NYLOC NUT	1
99-280-7012-02	1/4-20 NYLOC NUT	1
99-280-7017-02	FLAT WASHER, 1/4 SST	2
99-280-7018-07	LOCK WASHER, 1/4 SPLIT SST	4
99-280-7018-08	WASHER, 5/16 SPLIT	1
99-280-7505-16	1/4-20 X 1 H.H SST	2
99-G10-2576-00	TUBE, GUIDE ARM	1
99-G10-2577-00	SHAFT, GUIDE ARM	1
99-G10-2578-00	PLATE, GUIDE ARM MOUNT	1
99-G10-2606-03	BUSHING, GUIDE ARM .750 X .800	1
99-G10-2608-00	BLOCK, GUIDE ARM ACTUATOR	1
99-G10-2614-00	BLOCK, GUIDE ARM SPRING	1
99-G10-2641-00	BAR, GUIDE ARM EXTENSION	1
99-G10-2653-00	BLOCK, GUIDE SAFETY STRAP	1
99-G10-7503-00	1/4 X 3/8 SHSB BLK STEEL	1
99-G10-7507-11	1/4-20 X 1 3/4 FHS	1
99-G10-8505-08	SPRING, GUIDE ARM	1
99-G20-1522-00	BLOCK, GUIDE TUBE MOUNT	1
99-G20-1615-00	BLOCK, GUIDE ARM RETURN	1
99-G20-1616-00	BLOCK, GUIDE ARM RETURN (SMALL)	1
99-G20-1617-01	BUSHING, SPLIT GUIDE ARM	1
99-G20-1617-02	BUSHING, GUIDE ARM	1
99-G20-7020-03	FLAT WASHER, 1/4 DELRIN	5
99-G20-7503-02	1/4 X 3/4 SHSB BLK STEEL	1
99-G20-7503-02	SHSB, 1/4 X 3/4	1
99-G20-7505-16	5/16-18 X 1 1/2 H.H.	1
99-G20-7506-01	1/4-20 X 1 1/2 SHCS SST	1
99-G20-7506-02	1/4-20 X 2 SHCS SST	1
99-G20-7515-01	SNAP RING, CRESENT 3/4"	2
99-G20-8500-04	BEARING, FRONT WHEEL	3
99-G20-9500-05	ACTUATOR, GUIDE ARM	1