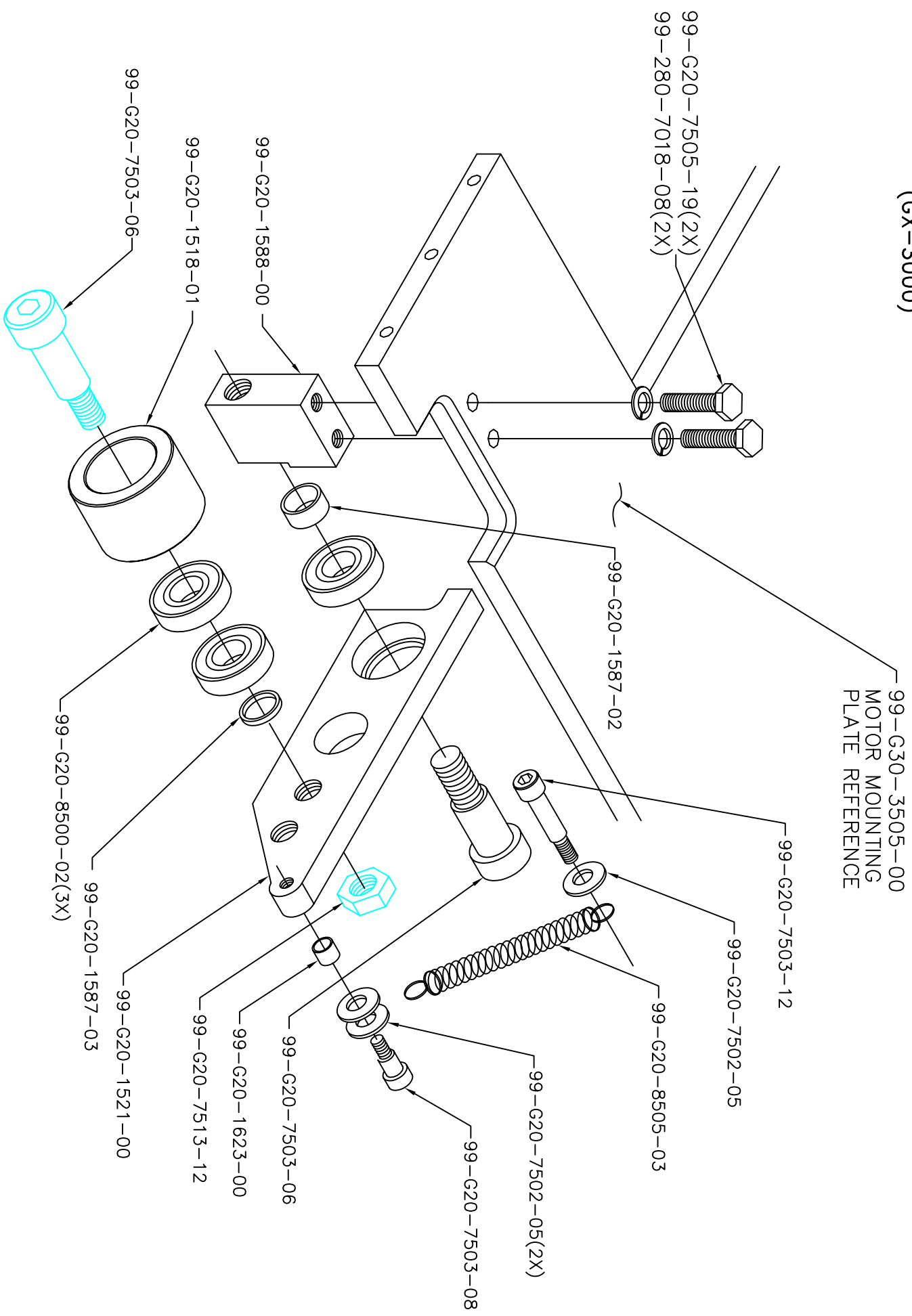


# 84-G30-3699-04 BLADE IDLER PULLEY (GX-3000)



# BLADE IDLER PULLEY

## 84-G30-3699-04

PART #	DESCRIPTION	QTY
99-280-7018-08	LOCK WASHER, 5/16 SPLIT	2
99-G20-1518-01	PULLEY, FOR PUMP & BLADE	1
99-G20-1521-01	ARM, BLADE IDLER PULLEY	1
99-G20-1587-02	SPACER, ALUM. .350 WIDE	1
99-G20-1587-03	SPACER, ALUM. .100 WIDE	1
99-G20-1588-00	BLOCK, BLADE IDLER PULLEY MOUNT.	1
99-G20-1623-00	BUSHING, G.A.	1
99-G20-7502-05	WASHER, FLAT .625 X .312 X .032 SST.	3
99-G20-7503-06	5/8 X 3/4 SHSB BLK STEEL	2
99-G20-7503-08	5/16 X 3/4 BLACK STEEL	1
99-G20-7503-12	5/16 X 1 SHSB	1
99-G20-7505-19	5/16-18 X 1 1/4 GRADE 8 H.H.	2
99-G20-7513-12	1/2-13 JAM NUT	1
99-G20-8500-02	BEARING, IDLER PULLEY R10LL	3
99-G20-8505-03	SPRING, BLADE IDLER PULLEY	1