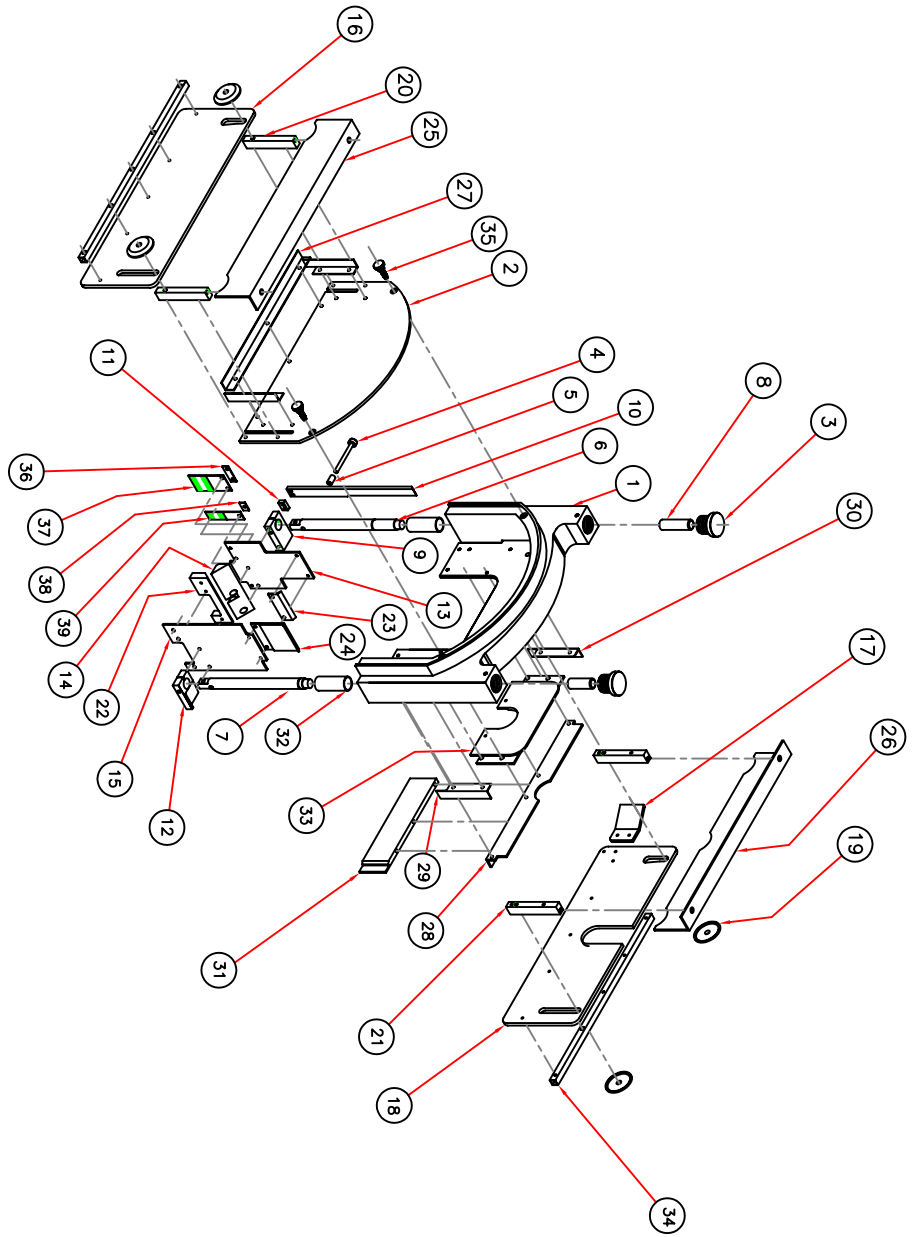


PROPRIETARY DATA ARE INCLUDED IN THE INFORMATION DISCLOSED HEREIN. NEITHER THIS DOCUMENT NOR THE INFORMATION DISCLOSED HEREIN SHALL BE REPRODUCED OR TRANSMITTED IN ANY FORM OR BY ANY MEANS, OR FOR ANY OTHER PURPOSE EXCEPT AS SPECIFICALLY AUTHORIZED IN WRITING BY SOFT-CUT INTERNATIONAL.

NOTES: UNLESS OTHERWISE SPECIFIED
1. ASSEMBLE PER STANDARD SHOP PRACTICE.

84-G30-3699-10
BLADE BLOCK ASSY.
(G-3000)



ITEM	PART NUMBER	DESCRIPTION	REQ
1	3540-00	BLADE BLOCK	1
2	3541-00	COVER/ BLADE BLOCK	1
3	3542-00	KNOB/ BLADE BLOCK	2
4	G30-8507-01	SNAPPER PIN	1
5	3542-01	SPACER/ SNAPPER PIN	1
6	3543-01	ROD/ REAR (BLADE BLOCK)	1
7	3543-02	ROD/ FRONT (BLADE BLOCK)	1
8	3543-03	ROD/ BLADE BLOCK (PLASTIC)	2
9	3545-00	ROD CLAMP/ REAR	1
10	3545-01	DEPTH POINTER	1
11	3545-02	SPACER/ DEPTH POINTER	1
12	3545-03	ROD CLAMP/ FRONT	1
13	3546-00	DIVERTER PLATE/ REAR	1
14	3546-01	PYRAMID	1
15	3547-00	DIVERTER PLATE/ FRONT	1
16	3548-00	LEXAN/ OUTER	1
17	3548-01	LEXAN SHIELD DIVERTER/ THICKER	1
18	3549-00	LEXAN/ INNER	1
19	3549-01	WASHER/ LEXAN (BLACK)	4
20	3550-00	MOUNTING BLOCK/ DIVERTER(OUTER)	1
21	3551-00	MOUNTING BLOCK/ DIVERTER (INNER)	2
22	3552-00	DIVERTER/ FRONT-BIG-NEW	1
23	3553-00	STEEL WIPER/ REAR	1
24	3553-01	STEEL WIPER/ FRONT	1
25	3554-00	ANGLE BRACKET/ BLADE BLOCK (OUTER)	1
26	3555-00	ANGLE BRACKET/ BLADE BLOCK (INNER)	1
27	3560-00	BRACKET/ OUTER BLADE COVER(BOTTOM)	1
28	3560-03	ANGLE BRACKET/ BLADE BLOCK (BACK)	1
29	3561-02	ANGLE DIVERTER/ BLADE COVER (LEFT)	2
30	3561-01	ANGLE DIVERTER/ BLADE COVER (RIGHT)	2
31	3561-03	LEXAN DUST SHIELD/ INNER	1
32	3597-00	BUSHING/ BRONZE	2
33	3627-00	INSERT/ BLADE BLOCK BELT ACCESS	1
34	3637-00	STIFFENER/ LEXAN PANEL	2
35	1640-00	KNOB/ BLADE COVER	2
36	3712-00	MOUNTING BAR/ RUBBER FLAPS (BIG)	1
37	3712-01	DUST FLAP/ LARGE	1
38	3713-00	MOUNTING BAR/ RUBBER FLAPS	2
39	3713-01	DUST FLAP/ SMALL	2

THIRD ANGLE PROJECTION			
DRAWN	ACKERMAN	DATE:	
CHKD		DATE:	
APP'D		DATE:	
REV		DATE:	
TITLE		SCALE	SHEET
BLADE BLOCK ASSY.		1:8	1/2
MATERIAL		DATE	REV
		11/5/98	A
PART NO. 84-G30-3699-10			

Soft-Cut
1112 OLYMPIC CORONA CA. 91719
TEL: (909) 272-2330 FAX: (909) 272-2338